

# **Long Term Facilities Plan Architectural Renderings LSS Family of Schools**

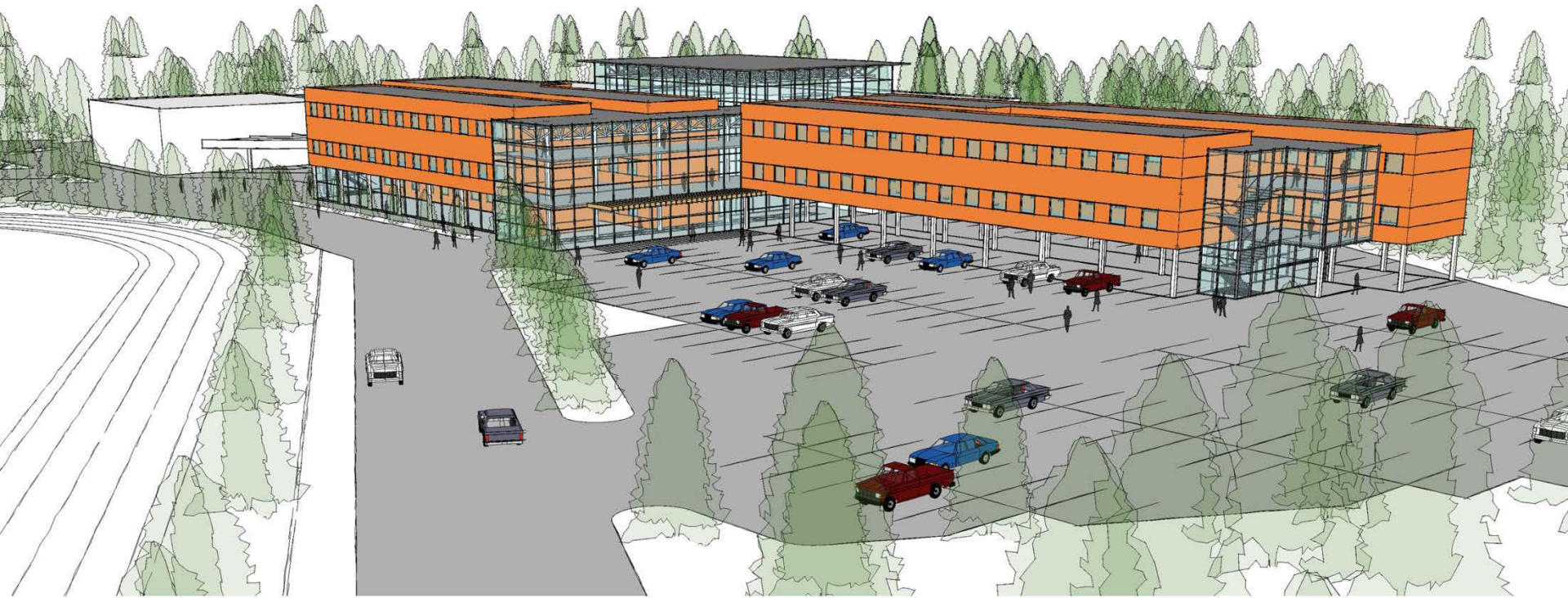
**Friday, February 6, 2015**



**The following renderings of Brookwood, Simonds and HD Stafford were shared at all community meetings held in December and January.**

**The last two slides show renderings of a “right-sized” new Langley Secondary School which have not been previously shared with the community.**

# Brookwood Expansion



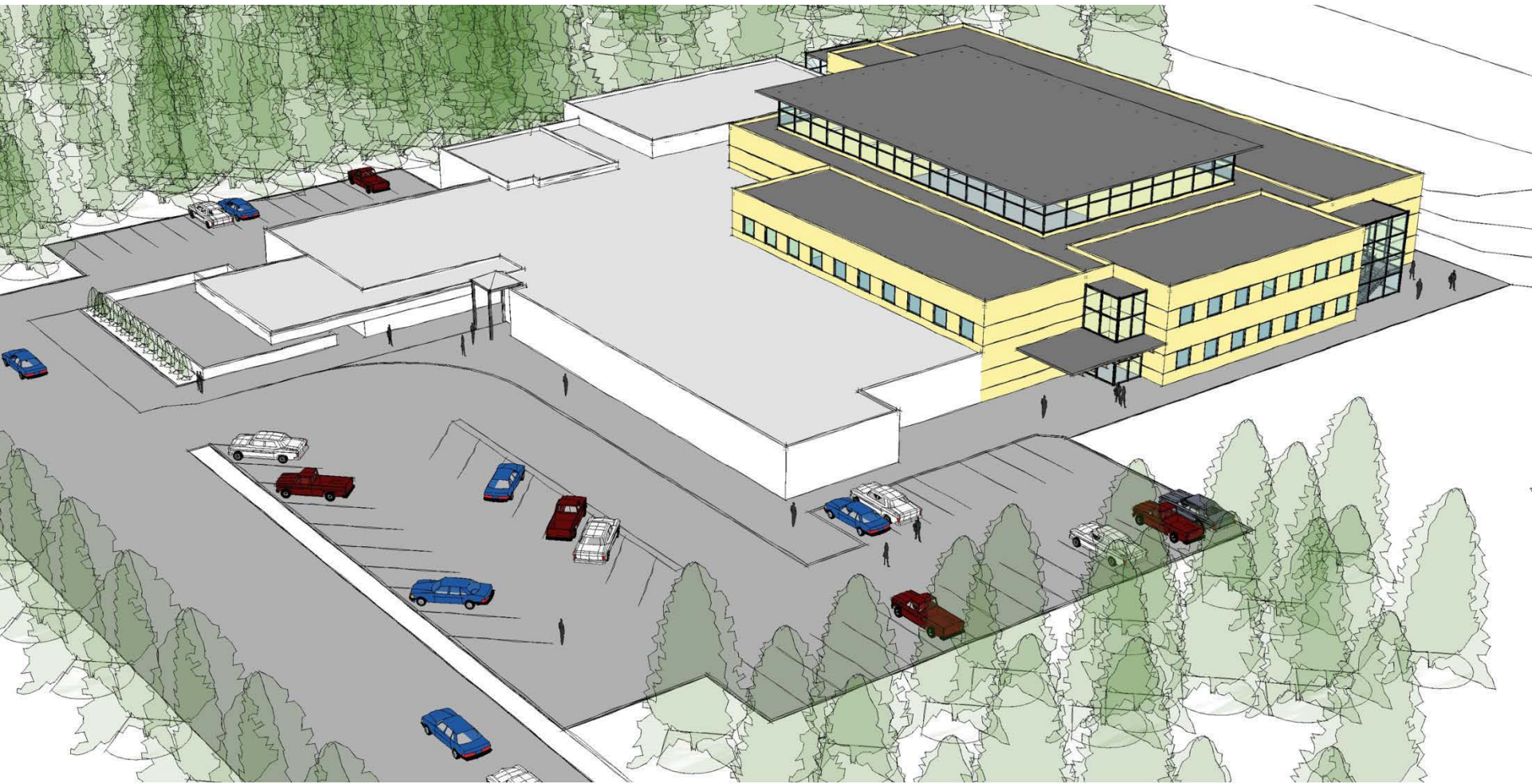
**BROOKSWOOD SECONDARY SCHOOL**  
CAPACITY: 1800 STUDENTS



# Brookwood Expansion



**BROOKSWOOD SECONDARY SCHOOL**  
CAPACITY: 1800 STUDENTS



Simonds becomes a 6-8 Middle School

SIMONDS MIDDLE SCHOOL  
CAPACITY: 600 STUDENTS

Architectural Renderings – LSS Family of Schools  
February 2015







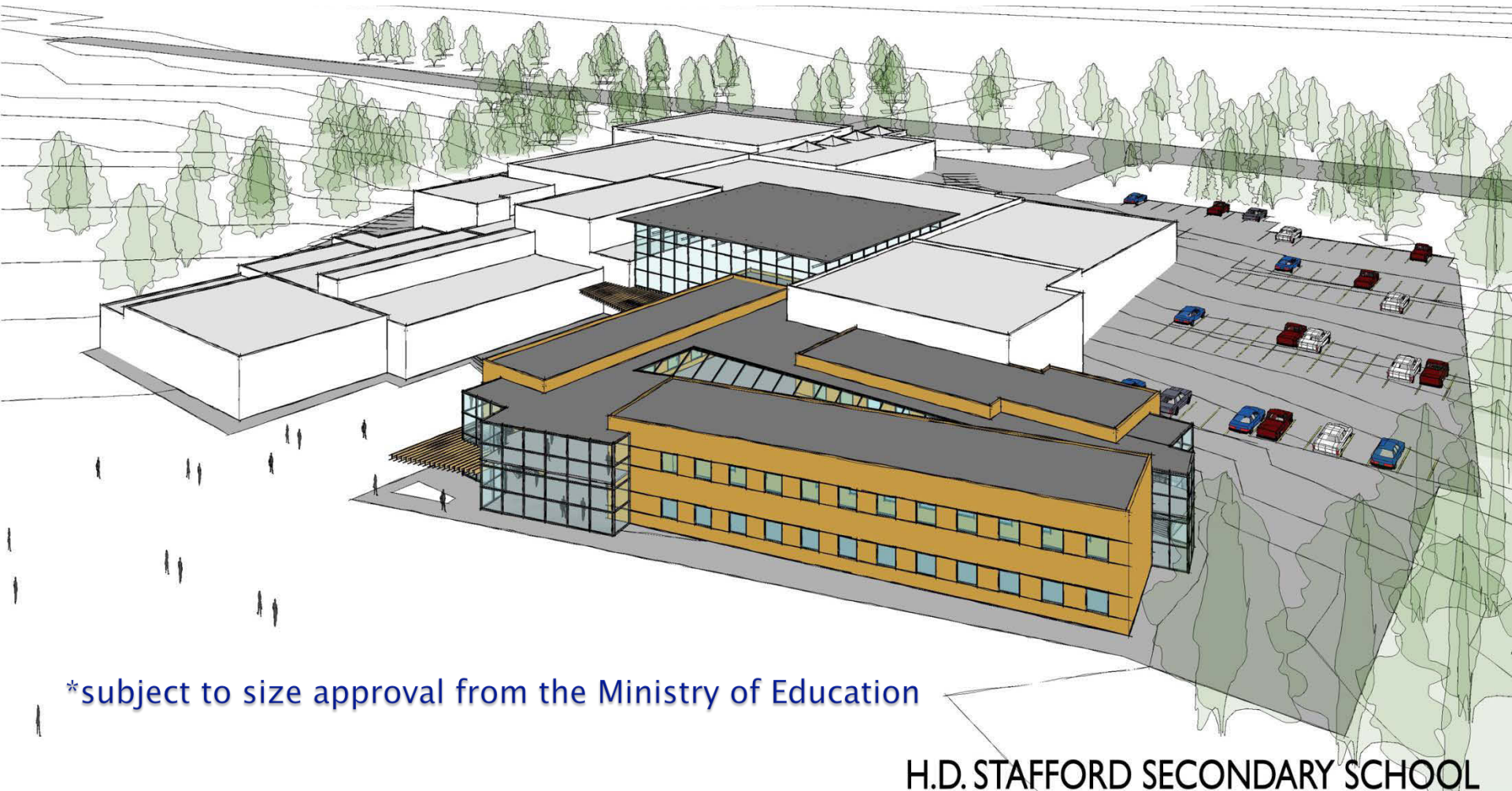
# Simonds becomes a 6-8 Middle School

SIMONDS MIDDLE SCHOOL  
CAPACITY: 600 STUDENTS

Architectural Renderings – LSS Family of Schools  
February 2015



# HD Stafford becomes a 9-12 Secondary School

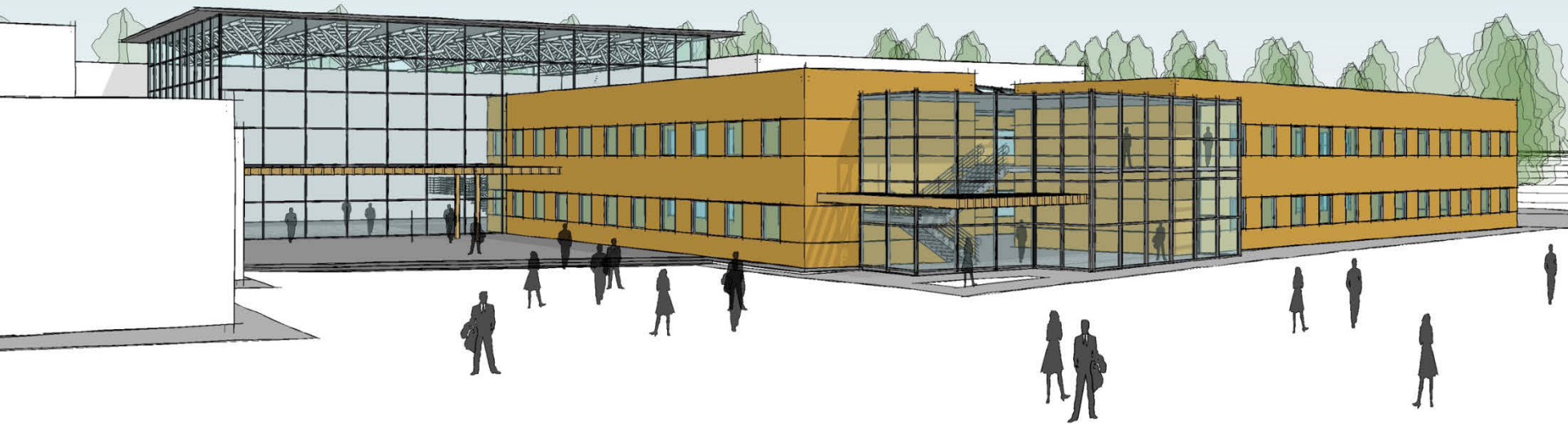


\*subject to size approval from the Ministry of Education

**H.D. STAFFORD SECONDARY SCHOOL**  
CAPACITY: 1200 STUDENTS



# HD Stafford becomes a 9-12 Secondary School

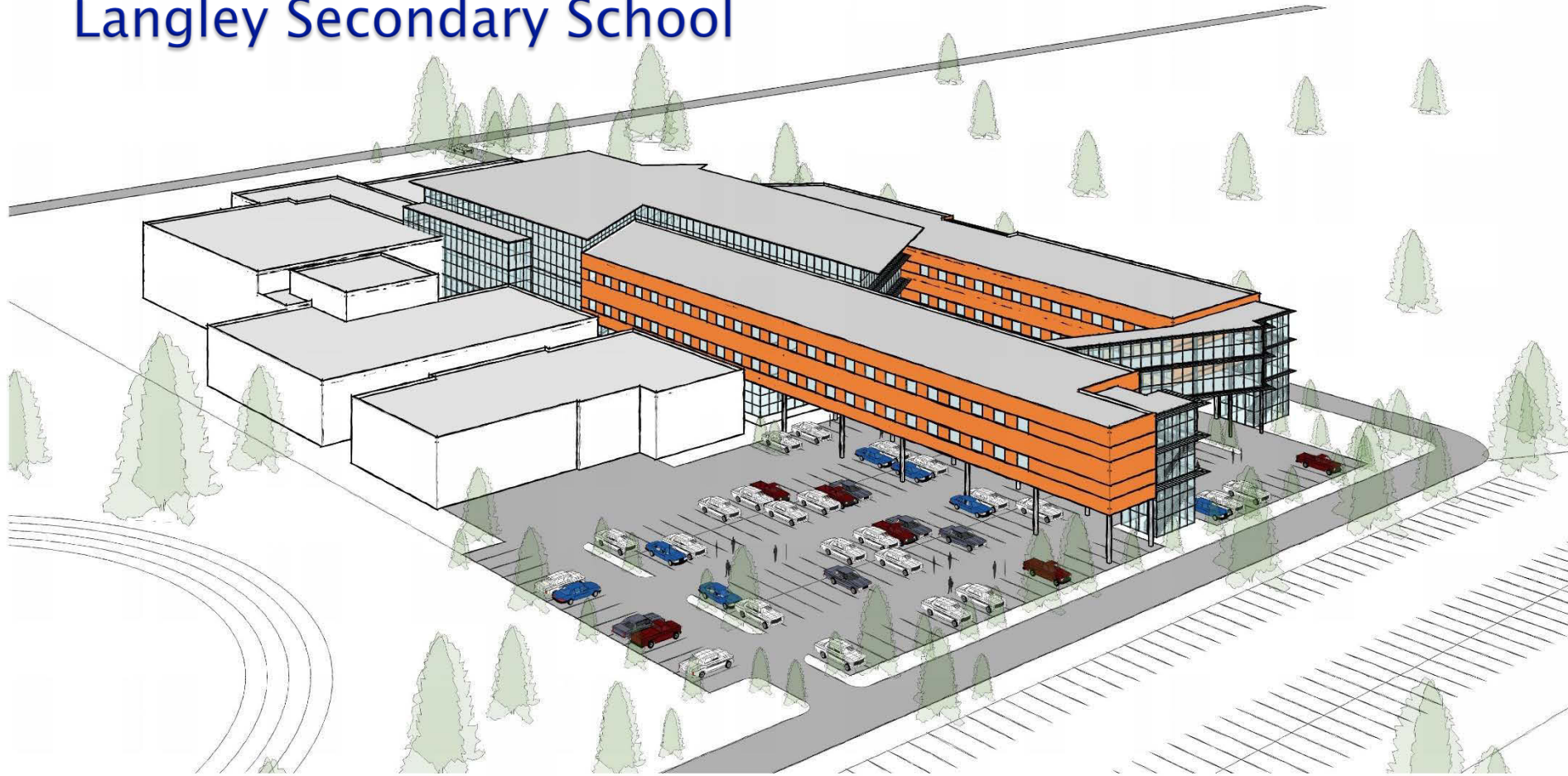


\*subject to size approval from the Ministry of Education

**H.D. STAFFORD SECONDARY SCHOOL**  
CAPACITY: 1200 STUDENTS



# Langley Secondary School



## LANGLEY SECONDARY SCHOOL

CAPACITY: 1200 STUDENTS

# Langley Secondary School



## LANGLEY SECONDARY SCHOOL

CAPACITY: 1200 STUDENTS

Architectural Renderings – LSS Family of Schools  
February 2015

