

# **Long Term Facilities Plan “Community Consultation”**

**Wednesday, December 3, 2014  
3:30pm & 6:30pm  
RE Mountain Secondary School**



# Introductions

# Purpose of the Meeting

**To follow-up on a Board of Education motion from June 17, 2014 regarding Secondary School Options that indicated,**

“That the Board requests a public consultation be undertaken in the Fall to explore these options with the broader school community.”

**To continue the implementation of the Long Term Facilities Plan recommendations**

- Langley Secondary School seismic requirements
- Willoughby Slope growth and needs

# Purpose of the Meeting

**To inform the community and to become informed by the community**

**To inform District Staff in preparing recommendations for the Board of Education**

**To inform a business case for the Board of Education to present to the Ministry of Education**

# Guiding Principles for an Effective Consultation Process

1. That the consultation process be one of integrity where honesty and transparency are of utmost importance.
2. That trust between communities and the District be developed and maintained throughout the process.
3. That the District listen to communities and sincerely reflect on feedback and ideas.
4. That the District value and honour community members and treat them with respect.

October 2, 2014

# A Focus on Children

- ✓ **Caring for the social – emotional well-being of children**
- ✓ **Being mindful of the physical well-being of children**
- ✓ **Providing vibrant and sustainable learning opportunities for all children**

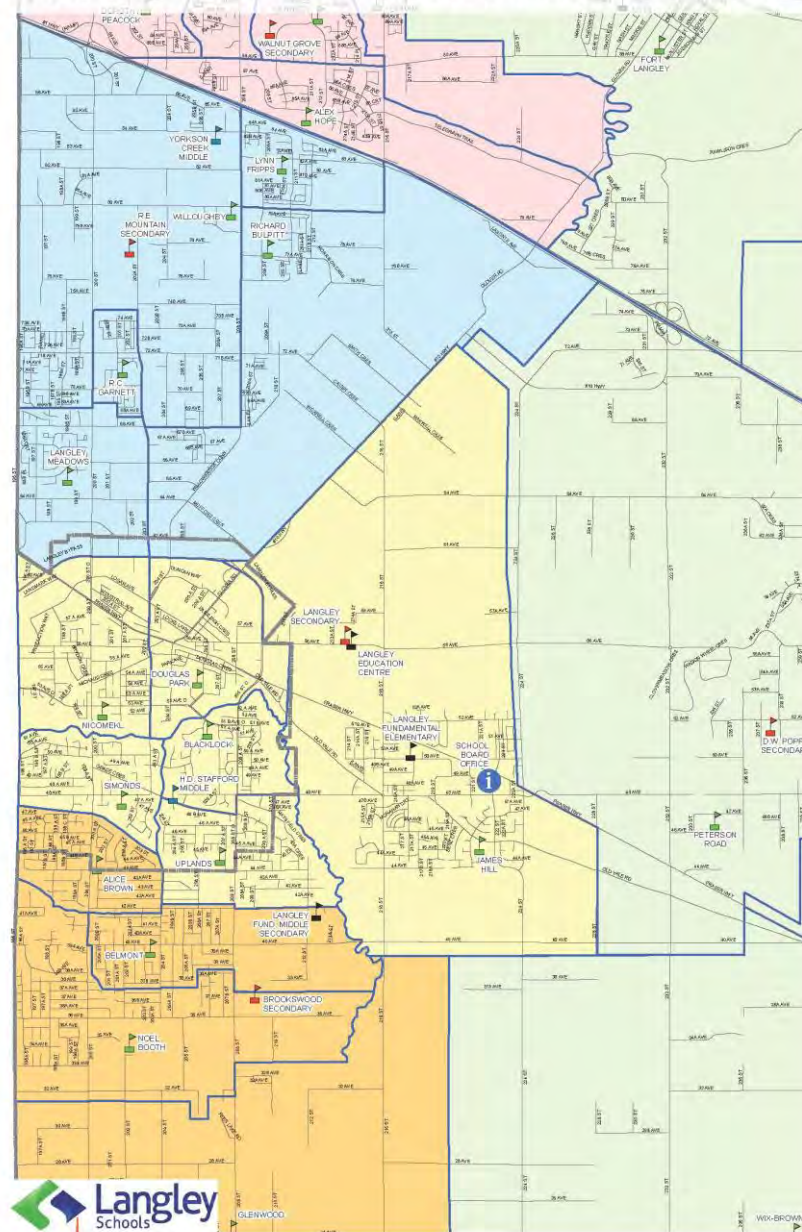
# District Considerations

# District Pressures

- ✓ **Seismic requirements at Langley Secondary School**
- ✓ **Rapid growth on the Willoughby slope**
- ✓ **Under enrolment capacity – excess space at some schools**
- ✓ **Limited capital funds to address facility needs**



# Langley Schools – Brookwood, Langley City, and Willoughby – September 2014



Community Consultation  
December 1, 2 & 3, 2014

# Status with the Ministry of Education

- ✓ **No funding at this time**
- ✓ **Timeline – to be determined**
  - ✓ Subject to funding
- ✓ **As a community, be ready with a plan**

# Process

# Process to Date

## Meetings

- Board of Education
- Ministry of Education
- Local MLAs
- Township of Langley
  - Liaison Meeting
  - Meetings with Staff
- City of Langley
  - Liaison Meeting
  - Meetings with Staff
- Administrators
- District Staff

# Process to Date

## Meetings

- DPAC President and Vice-President
- Union representatives
- Parents from Langley Secondary and RE Mountain families of schools (October 2<sup>nd</sup>)
  - Guiding Principles
  - Format for Consultation

# Process to Date

## November 24<sup>th</sup> Meetings

- ▶ **Staff Meetings**
- ▶ **Community Meeting**
  - **Feedback and analysis**

## 24Nov2014 City Possibilities Feedback

File Edit View Insert Format Tools Table Add-ons Help All changes saved in Drive

Comment

City Option #1 (MM) "Complete seismic updates at LSS" room 128	What other info about this possibility would you need wrt the PROCESS?	What other questions would you have about this possibility?	Other Comments
Group 1 (HDS)	How are you going to shift the students - do you have enough space to move kids?	Is it beneficial to upgrade a 50 year old building - will it last another 10 or 20 years or is it just a bandaid?	If we close this school in several years time will we need a school here again because growth patterns may

	<p>While the work is being done?</p> <p>How long will it take? What about health risks for the students (proper taping off of sections etc).</p> <p>Will it take a long time because of the condition of the school or is that the standard time? If it needs to be done, do it but have plans for the students?</p>	<p>If you're going to do the upgrade, what about the other things you'll need to bring up to date?</p> <p>Does this address the underground water issue?</p> <p>What is the price difference with upgrades and tearing it down and building a new one on the same site?</p>	<p>change again?</p> <p>What comes off the table if LSS is upgrade - what is the loss somewhere else?</p> <p>If there is no new school at the site, would we lose all the funding? Could we benefit financially from closing LSS?</p>
--	--	---	---



# Process Moving Forward

**Suggestions from November 24<sup>th</sup> were incorporated into these presentations:**

- Staff Meeting: Monday, December 1<sup>st</sup>, 7pm at the Langley Events Centre
- LSS Community: Tuesday, December 2<sup>nd</sup>, 3:30pm or 6:30pm at HD Stafford Middle School
- REMSS Community: Wednesday, December 3<sup>rd</sup>, 3:30pm or 6:30pm at RE Mountain Secondary School



# Proposed Timeline

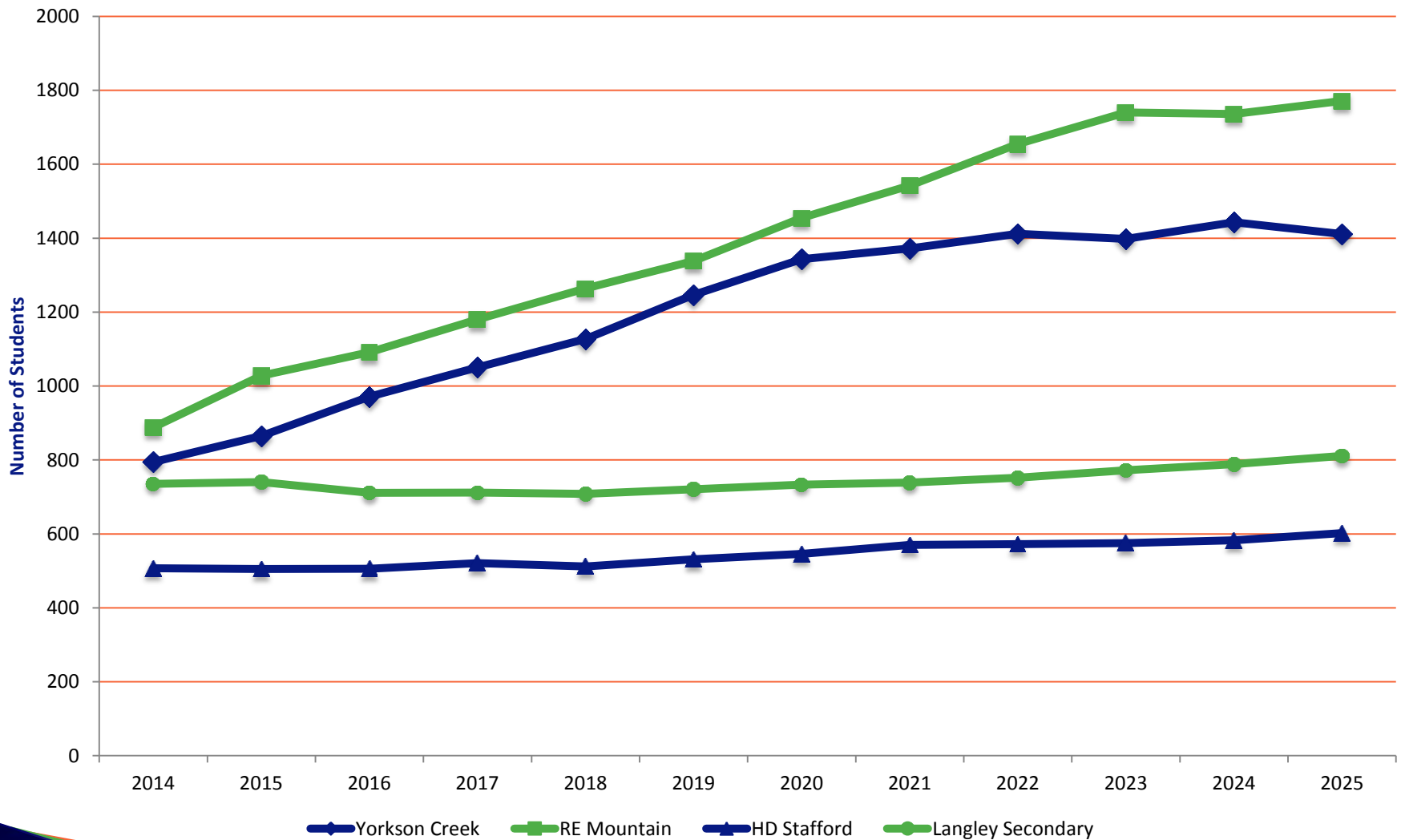
- ▶ December 16<sup>th</sup>
  - Regular Meeting of the Board of Education
- ▶ January – smaller group meeting
  - Date TBD
- ▶ January – staff meetings
- ▶ January 27<sup>th</sup>
  - Regular Meeting of the Board of Education
    - Recommendation on the business case\*
- ▶ Date TBD
  - Implement the details of the plan, after Ministry approval

# Possibilities

# **Two Communities** **~ Inextricably Linked ~**



## Langley City & Willoughby - Projected Middle and Secondary Enrolments



# Willoughby Slope

- ✓ **Build a new 9 – 12 secondary school**
- ✓ **Build a new 6 – 8 middle school**
- ✓ **Business Case not accepted**

# City Schools

- ✓ **Complete seismic upgrade at Langley Secondary School**
- ✓ **Close Langley Secondary School**
  - HDSMS 9 - 12
  - Simonds 6 - 8
- ✓ **Close Langley Secondary School**
  - HDSMS feeds BSS

# RE Mountain Community

**Construct a new high school**

**Convert RE Mountain to a middle school**



# New Willoughby High School



Community Consultation  
December 1, 2 & 3, 2014

## Effects

- Convert RE Mountain to a middle school
  - Some seismic upgrades and enhancements required
- Enhances elective options at RE Mountain middle school
- Allows greater access to a wider range of courses and programs
- Creates modern learning environments
- Requires land acquisition
- Requires 42-48 months to complete a new secondary school (approx 1500 students)
- Requires a plan for overcrowding at YCMS
  - Addressed later in presentation

**Construct a new middle school**

**Expand RE Mountain Secondary**



# New Willoughby Middle School



Community Consultation  
December 1, 2 & 3, 2014



# REMSS expanded



Community Consultation  
December 1, 2 & 3, 2014

## Effects

- Creates flexible, collaborative learning environments at both REMSS and the new middle school
- Allows for pod structure similar to Yorkson Creek Middle
- Requires land acquisition
- Requires a plan for students due to overcrowding at YCMS
- Requires 24–30 months to complete a new middle school
  - Shorter timeline compared to a new high school

# Business Case Not Approved

# Use existing facilities within the District

## Effect

- Strengthens cohort size at other schools that are under capacity
- Students bussed or moved to other schools in the District for grades 9 – 12
- RE Mountain becomes a middle school
- Would need to determine a plan to address catchment and logistics to feed into other secondary schools if this option came into effect



# Potential Short Term Solutions for Yorkson Creek Middle School

- Schools operate as K-6 schools
  - Create a grade 6 school
  - Run REMSS as an 8-12 school on shifts
  - Bus students to other middle schools
- \* Letter sent regarding eligibility requirements for attending YCMS effective September 2016

# Langley Secondary Community

# LSS Seismic Upgrade Completed

## Langley Secondary School remains open

- Complete seismic upgrades
  - Same building but up to code in the event of an earthquake

## Effects

- Students and staff remain at current locations
- Maintains current school cultures
- LSS is not located in an established community
- Only addresses seismic needs
  - Additional funds required to maintain the facilities
- Convenient access to athletic facilities
- Honours the historical legacy of LSS
- Maintains small cohort size and structural limitations to 21<sup>st</sup> century learning (parts of the building are 70 years old)
- Does not address the 21<sup>st</sup> century learning needs of both communities

HD Stafford Becomes a 9 – 12  
secondary school

Simonds becomes a 6 – 8 middle  
school

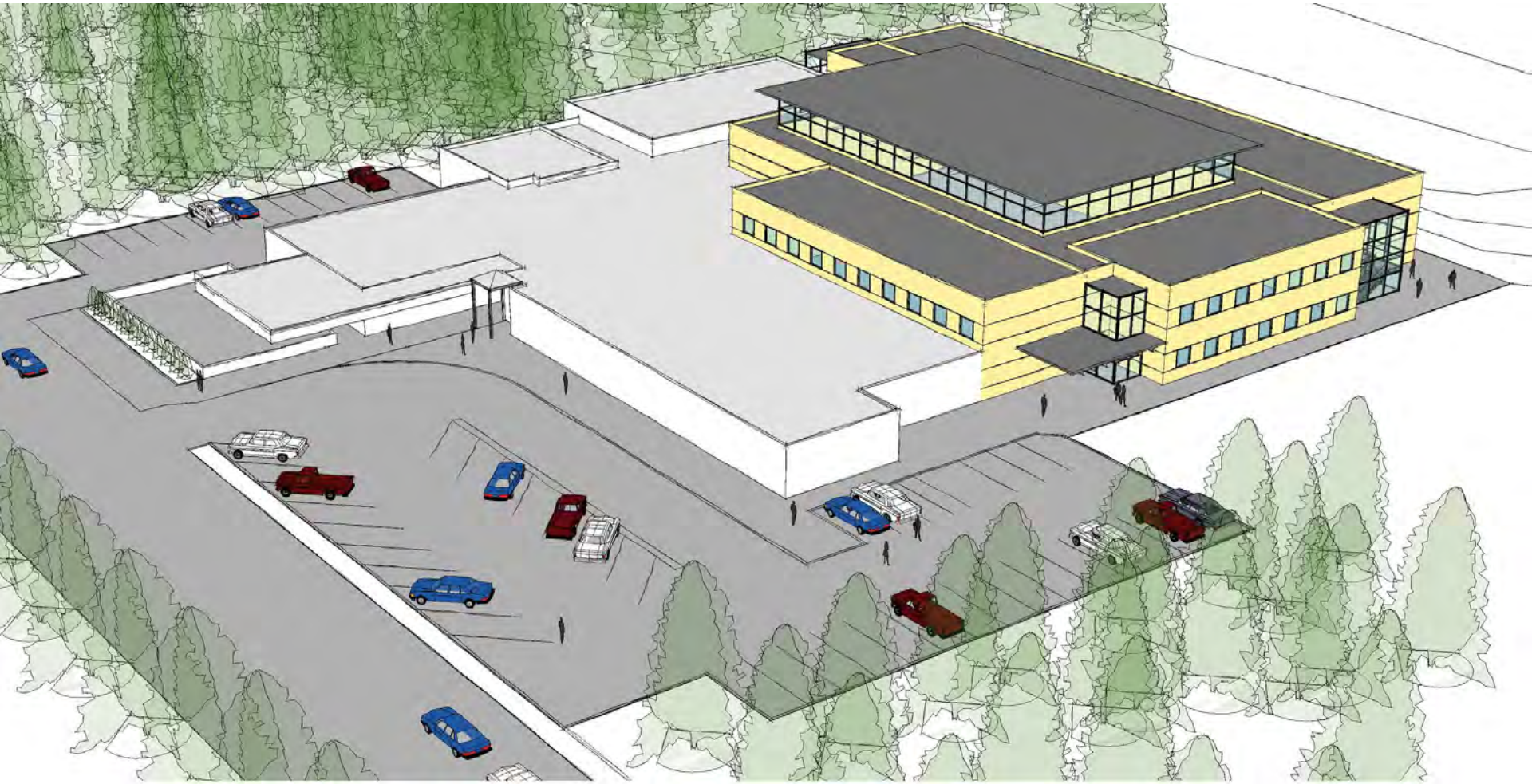
# HD Stafford becomes a 9 – 12 secondary school



**H.D. STAFFORD SECONDARY SCHOOL**  
CAPACITY: 1200 STUDENTS



# Simonds becomes a 6 – 8 middle school



**SIMONDS MIDDLE SCHOOL**  
CAPACITY: 600 STUDENTS

Community Consultation  
December 1, 2 & 3, 2014

## Effects

- Opportunities for 21<sup>st</sup> century learning structures
  - Collaborative & Flexible Learning
  - HD Stafford and Simonds
- LSS and HDSMS students move into remodeled schools in the City and within the neighbourhood
- Students and staff could move together\*
- Maintains the LSS & HDSMS culture and community
- Simonds students attend another city school(s)
- Community impacted with move to HDMS and Simonds
- Exists within established neighbourhood
- Impacts on Strong Start, daycares, and preschools
- Same challenges of smaller cohort size remains

\*requires consultation with, and agreement by, Unions and District



# HD Stafford Middle students transition to BSS for high school

# HDSMS becomes a BSS feeder school



**BROOKSWOOD SECONDARY SCHOOL**  
CAPACITY: 1800 STUDENTS

Community Consultation  
December 1, 2 & 3, 2014

## Effects

- Langley Secondary students move into an expanded and enhanced Brookwood Secondary School
- Course offerings would be greater due to larger cohorts
- Students could move together
- LSS and BSS culture redefined
- Two entry points for BSS, grade 8 and grade 9
- May align with potential future growth in the Brookwood community

# Langley Education Centre

(Currently located at LSS)

## Need to find a viable location

- Could provide students the option of a 7:30 am - 10 pm school\*
- The goal is to create additional space to offer more opportunities and accommodate growing enrollment
- Could be located at more than one site

\*subject to discussions with District and Unions

# Sources of Capital Funding

- ▶ Seismic Funding
- ▶ Property Sales
- ▶ Local Capital Funds
- ▶ Ministry of Education Funds

# Two Communities Linked

- ▶ LSS Seismic Upgrade & Willoughby New Secondary School
  - Total cost of project (approx) \$95m
  - Ministry funding required (approx) \$60m
- ▶ LSS Seismic Upgrade & Willoughby New Middle School
  - Total cost of project (approx) \$85m
  - Ministry funding required (approx) \$50m



# Two Communities Linked

- ▶ Close LSS; HDS & Simonds Conversions & Willoughby New Secondary School
  - Total cost of project (approx)  
\$92m
  - Ministry funding required (approx) \$45m
  
- ▶ Close LSS; HDS & Simonds Conversion & Willoughby New Middle School
  - Total cost of project (approx)  
\$85m
  - Ministry funding required (approx) \$35m

# Two Communities Linked

- ▶ HDS becomes a BSS feeder & build a new Willoughby High School
  - Total cost of project (approx) \$90m
  - Ministry funding required (approx) \$40m
  
- ▶ HDS becomes a BSS feeder & build a new Willoughby Middle School
  - Total cost of project (approx) \$80m
  - Ministry funding required (approx) \$30m



# Moving Forward

**Upon completion of consultation and once funding is available, a more detailed plan will be developed.**

# Communications

Website:

[www.sd35.bc.ca/ltfp](http://www.sd35.bc.ca/ltfp)

Hash tag:

**#SD35LTFP**

Feedback email:

[feedback@sd35.bc.ca](mailto:feedback@sd35.bc.ca)

Newspaper Ads

School Newsletters

## ► FAQ consultation link

### 5. What is cohort size and the implications of cohort size - advantages to a big school vs a little school?

Cohort size refers to the number of students in each grade at a school. A larger school may have 250 kids to 400 Grade 9 students versus 100 to 200 students. When a cohort is larger, there are far more opportunities available to kids in that more varied course offerings are made available as well as more scheduling options within those choices. For example, a school with a small grade cohort may have 2 math offerings while a larger school may be able to offer 6 math options. With 2 math offerings, a student may have to drop an elective to fit a required math course due to a scheduling conflict. When there are 6 math offerings, a student has more timetable slots available to take math and electives at different times. A school with a larger population and cohort size there is an opportunity have have more varied course content offerings. A minimum class size can be reached for a 'more obscure' class like ceramics, for example. At a smaller school with a small cohort, our example may not meet a minimum class size to allow the class to go ahead. With a larger cohort, a class can reach that minimum and therefore the class can go ahead. The opportunities for students can be more varied, allowing children to try new things and draw the into positive activities.

# Discussion

# Discussion

- ▶ Tables 1 & 2 – Finance & Facilities
- ▶ Tables 3 or 4 – Build a new high school in Willoughby
  - Convert REMSS to a middle school
- ▶ Tables 5 or 6 – Build a new middle school
  - Expand REMSS
- ▶ Tables 7 or 8 – Business Case not Approved

# Discussion

- ▶ Table 9 – Other community options/LEC
- ▶ Table 10 – Learning Opportunities
  - Size of School & Cohort Size
- ▶ Table 11 – Learning Opportunities
  - Discussion on Middle Schools
- ▶ Table 12 – Why a discussion on community?
- ▶ Table 13 – Transportation
- ▶ Table 14 – Other Considerations



# LANGLEY SCHOOL DISTRICT

## PURPOSE MISSION

TO INSPIRE ALL LEARNERS  
TO REACH THEIR FULL POTENTIAL  
AND CREATE A POSITIVE LEGACY  
FOR THE FUTURE

## CORE VALUES

Accepting  
**INTEGRITY**  
Respectful Kind  
Trustworthy

Success Effort  
**EXCELLENCE**  
Engagement Hope  
Adaptability  
Achievement

Creativity Inspiration  
**COURAGE**  
Critical thinking  
Problem-solving

Connection  
Relationship Caring  
**COMMUNITY**  
Collaboration Inclusion  
Teamwork Belonging  
Partnership

**Vision**  
AN INNOVATIVE,  
INSPIRING and UNIFIED  
Learning community

Awakened sense of curiosity & wonder  
RELEVANT, MEANINGFUL CHOICES for STUDENTS  
IGNITE A LIFELONG PASSION for LEARNING  
Personalized, self-directed learning  
Engaged learners

Anywhere, any time  
LEARNING TAKES PLACE THROUGH FLEXIBLE & CONNECTED ENVIRONMENTS  
Connected to local & global community  
Networked & collaborative learning

LEARNERS ARE KNOWLEDGEABLE, SKILLED and INNOVATIVE  
Student success + confidence  
Empowered to create

OUR SCHOOLS FOSTER an INCLUSIVE & ACCEPTING CULTURE  
Every child belongs  
Respect for learning differences  
Socially responsible contributing citizens

# Thank-you for Participating